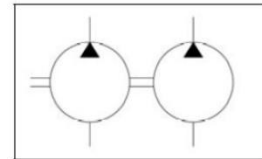




Catalogue of double gear hydroelectric generator

HP 80/80, HP 80/80 L
 HP 100/80, HP 100/80 L
 HP 100/100, HP 100/100 L



Technical conditions:

Pressure on outlet of hydroel. generator: - nominal 16 MPa
 - maximum * 19 MPa

* stated maximum pressure is only pressure peak of hydraulic circuit and it is not possible to consider this peak like working pressure.

Maximum time allowed for this overpressure are 3 seconds.

Pressure on input: - maximum 0,05 MPa
 - minimum - 0,03 MPa

Surroundings temperature -30 to +60°C

Liquid temperature -30 to +80°C

Liquid - mineral oil for hydrostatic drives f.e.:
 MOGUL OLN 22 TO 46
 Shell Tellus 32
 Shell Tellus 46
 Madit OHHM 46

Operating range of hydraulic oil kinematic viscosity during 40°C 20 - 60 mm² s⁻¹

Maximum kinematic viscosity (during start up) 1200 . mm² s⁻¹

Filtration efficiency of filter insert 10 - 25 µm
 β_{25} 75

Working position arbitrary

Technical specifications

Signification of gear hydroelectric generator	Nominal geometric capacity cm ³ / rot.	Rotations 1/min			Nominal pressure MPa	During nominal rotations and nominal pressure	
		min. *	max. *	nominal		input kW	overflow dm ³ /min
HP 80/80	80/80	600	2200	1500	16	68	108/108
HP 100/80	100/80	600	2200	1500	16	77	135/108
HP 100/100	100/100	600	2200	1500	16	85	135/135

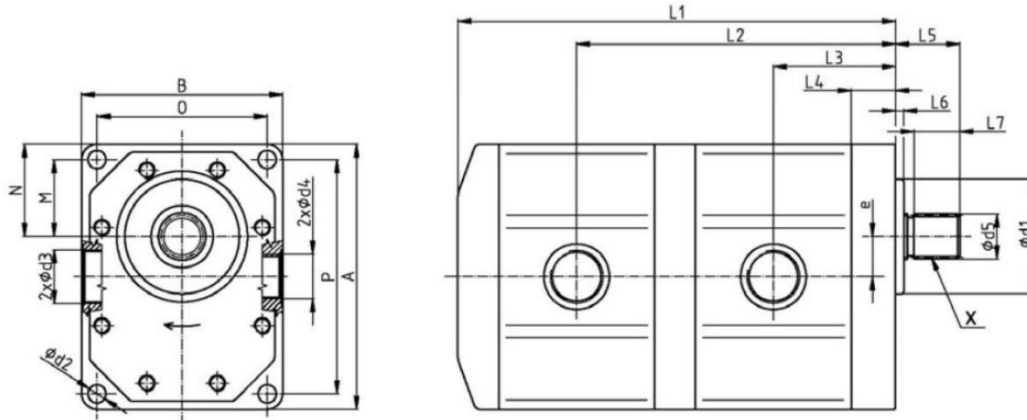
* Permanent operation on nominal pressure 16 MPa is allowed only in rotations range from 600 to 1 800 min⁻¹. Out of this rotations range is allowed max. pressure 12 MPa.

MARTING s.r.o. (Ltd.), NÁBREŽNÁ 2, SK - 038 61 VRÚTKY, SLOVAKIA
 tel.: ++421 43 4281 707-9, fax: ++421 43 4281 706, www.marting.sk
 E-mail: marting@marting.sk



Main built-up measurements - involute shaft, side connection

Pump types: HP 80/80, HP 100/80, HP 100/100, HP 80/80 L, HP 100/80 L, HP 100/100 L
(showed dextrorotary pump)



Pumps: HP 80/80, HP 100/80, HP 100/100, HP 80/80 L, HP 100/80 L, HP 100/100 L

(measurements in mm)

Nominal geometric capacity	L1	L5	L4	L6	L7		e	B	A	M	N
80/80	323	76	31	5	60		32,5	170	220	62,5	77,5
100/80	331										
100/100	339										

Nominal geometric capacity	L3	L2	O	P	d5	d1	d2
80/80	89	230	140	190	Involute splines 38 x 1,5 tolerance of counterpart - H9	95 f8	13
100/80	93	238					
100/100	93	242					

MARTING s.r.o. (Ltd.), NÁBREŽNÁ 2, SK - 038 61 VRÚTKY, SLOVAKIA
 tel.: ++421 43 4281 707-9, fax: ++421 43 4281 706, www.marting.sk
 E-mail: marting@marting.sk



Main built-up measurements - involute shaft, side connection

Pumps suction and displacement:

HP 80/80, HP 100/80
HP 100/100
HP 80/80 L, HP 100/80 L
HP 100/100 L

	Thread	Depth of thread	Lightness Js
Suction d3	M 48 x 2	22	40 required
Displacement d4	M 33 x 2	18	25 recommended

MARTING s.r.o. (Ltd.), NÁBREŽNÁ 2, SK - 038 61 VRÚTKY, SLOVAKIA
tel.: ++421 43 4281 707-9, fax: ++421 43 4281 706, www.marting.sk
E-mail: marting@marting.sk